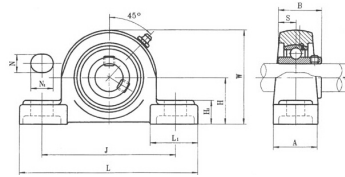


# UCP300 Series



select	Inquiry	Unit No.	Shaft Dia		Boundary dimensions(mm)										Bearing Housing No.	Mass(Kg)
			in.	mm	H	L	J	A	N	Ni	Hi	HO	S	B		
UCP305-14	7/8													UC305-14		
305-15	15/16	25	45	173	132	45	17	20	15	85	15	38	305-15	P305	1.4	
305													305			
305-16	1												305-16			
UCP306-18	1-1/8												UC306-18	P306	1.8	
306		30	50	180	140	50	17	20	15	95	17	43	306			
306-19	1-3/16												306-19			
UCP307-20	1-1/4												UC307-20	P307	2.8	
307-21	1-5/16		56	210	160	56	17	25	19	106	19	48	307-21			
307-22	1-3/8												307-22			
307		35											307			
UCP308-24	1-1/2												UC308-24	P308	3.0	
308-25	1-9/16		60	218	170	62	18	25	19	116	19	52	308-25			
308		40											308			
UCP309-26	1-5/8												UC309-26			
309-27	1-11/16		67	244	190	66	20	26	23	129	22	57	309-27	P309	4.1	
309-28	1-3/4												309-28			
309		45											309			
UCP310-30	1-7/8												UC310-30		5.8	
310-31	1-15/16		75	271	212	74	20	30	26	143	22	61	310-31			
310		50											310	P310		
UCP311-32	2												UC311-32			
311-34	2-1/8	55	80	300	236	80	20	32	29	154	25	66	311-34	P311	7.4	
311													311			
311-35													311-35			
UCP312-36	2-1/4												UC312-36			
312	2-3/8	60	85	325	250	85	23	35	31	164	26	71	312	P312	9.4	
312-38													312-38			
312-39	2-7/16												312-39			
UCP313-40	2-1/2	65	90	335	260	90	25	38	33	176	30	75	UC313-40	P313	10	