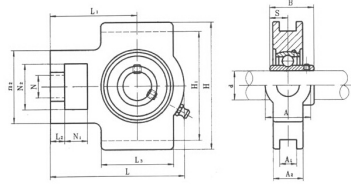
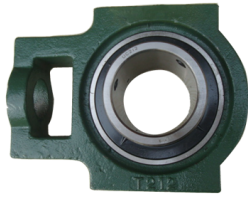


# UCT200



select	Inquiry	Unit No.	Shaft Dia d		Boundary dimensions(mm)														Bearing No.	Mass(Kg)
			in.	mm	N1	L2	H2	N2	N	L3	A1	H1	H	L	A	A2	L1	B		
UCT204-12	3/4	20	16	10	51	32	19	51	12	76	89	94	32	21	61	31	12.7	UC204-12	0.6	
204																		204		
UCT205-14	7/8																	UC205-14		
205-15	15/16	25	16	10	51	32	19	51	12	76	89	97	32	24	62	34	14.3	205-15	0.7	
205																		205		
205-16	1																	205-16		
UCT206-18	1-1/8																	UC206-18		
206	1-3/16	30	16	10	56	37	22	57	12	89	102	113	37	28	70	38.1	15.9	206	1.1	
206-19																		206-19		
206-20	1-1/4																	206-20		
UCT207-20	1-1/4																	UC207-20		
207-21	1-5/16																	207-21		
207-22	1-3/8		16	13	64	37	22	64	12	89	102	129	37	30	78	42.9	17.5	207-22	1.4	
207		35																207		
207-23	1-7/16																	207-23		
UCT208-24	1-1/2																	UC208-24		
208-25	1-9/16		19	16	83	49	29	83	16	102	114	144	49	33	88	49.2	19	208-25	1.8	
208		40																208		
UCT209-26	1-5/8																	UC209-26		
209-27	1-11/16		19	16	83	49	29	83	16	102	117	144	49	35	87	49.2	19	209-27	2.15	
209-28	1-3/4																	209-28		
209		45																209		
UCT210-30	1-7/8																	UC210-30		
210-31	1-15/16		19	16	3	49	35	B6	16	102	117	149	49	37	90	51.6	19	210-31	2.3	
210		50																210		
UCT211-32	2																	UC211-32		
211-34	2-1/8	55	25	19	102	64	35	95	22	130	146	171	64	38	106	55.6	22.2	211-34	3.1	
211																		211		
211-35	2-3/16																	211-35		
UCT212-36	2-1/4																	UC212-36		