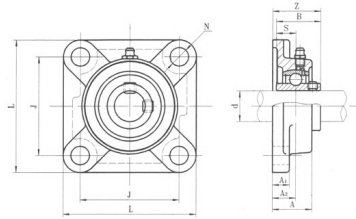


# UCF300



select	Inquiry	Unit No.	Shaft Dia d		Boundary dimensions(mm)									Bearing No.	Mass(Kg)
			in.	mm	H	L	J	A	N	N1	H1	H0	S		
UCF305-14	7/8	25	45	173	132	45	17	20	15	85	15	38	UC305-14		
305-15	15/16												305-15	1.2	
305	25												305		
305-16	1												305-16		
UCF306-18	1-1/8	30	50	180	140	50	17	20	15	95	17	43	UC306-18		
306	30												306	1.8	
306-19	1-3/16												306-19		
UCF307-20	1-1/4	35	56	210	160	56	17	25	19	106	19	48	UC307-20		
307-21	1-5/16												307-21	2.2	
307-22	1-3/8												307-22		
307	35												307		
UCF308-24	1-1/2	40	60	218	170	62	18	25	19	116	19	52	UC308-24		
308-25	1-9/16												308-25	2.9	
308	40												308		
UCF309-26	1-5/8		67	244	190	66	20	26	23	129	22	57	UC309-26		
309-27	1-11/16												309-27	3.5	
309-28	1-3/4												309-28		
309	45												309		
UCF310-30	1-7/8		75	271	212	74	20	30	26	143	22	61	UC310-30		
310-31	1-15/16												310-31	4.8	
310	50												310		
UCF311-32	2		80	300	236	80	20	32	29	154	25	66	UC311-32	5.6	
311-34	2-1/8												311-34		
311	55												311		
311-35	2-3/16												311-35		
UCF312-36	2-1/4		85	325	250	85	23	35	31	164	26	71	UC312-36	6.7	

UCF300

312	60												312	
312-38	2-3/8												312-38	
312-39	2-7/16												312-39	
UCF313-40	2-1/2	65	90	335	260	90	25	38	33	176	30	75	UC313-40	7.8