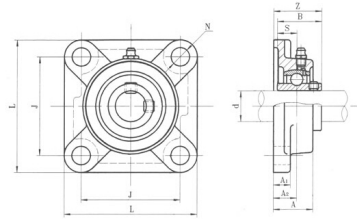


UCF200



select	Inquiry	Unit No.	Shaft Dia		Boundary dimensions(mm)								Bearing No.	Mass(Kg)
			d	d	L	J	A2	A1	A	E	N	S		
			in.	mm										
UCF 202		15										UC202		
202-10	5/8	17	76	54	15	32	25.5	30.9	11.5	11.5		202-10	0.57	
203												203	0.5	
203-11	11/16											203-11		
UCF204-12	3/4	20	66	64	ts	11	25.5	33.3	11.5	12.7		UC204-12	0.51	
204												204		
UCF205-14	7/8											UC205-14	0.6	
205-15	15/16	25	95	70	16	13	27	35.7	11.5	14.3		205-15		
205												205		
205-16	1											205-16		
UCF206-18	1-1/8											UC206-18		
206		30	106	83	16	13	31	40.2	11.5	15.9		206	0.95	
206-19	1-3/16											206-19		
206-20	1-1/4											206-20		
UCF207-20	1-1/4											UC207-20		
207-21	1-5/16											207-21		
207-22	1-3/8		117	92	19	15	34					207-22		
207		35										207		
207-23	1-7/16							44.4	14	17.5		207-23	1.21	
UCF208-24	1-1/2											UC208-24		
208-25	1-9/16	40	130	102	21	15	36	51.2	14	19		208-25	1.5	
208												208		
UCF209-26	1-5/8											UC209-26	1.7	
209-27	1-11/16	45	137	105	22	16	38	52.2	16	19		209-27		
209-28												209-28		

UCF200

209	1-3/4										209	
UCF210-30	1-7/8										UC210-30	
210-31	1-15/16	50	143	111	22	16	40	54.6	18	19	210-31	2.1
210											210	
UCF211-32	2										UC211-32	2.5