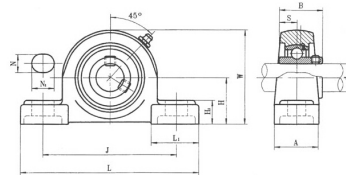


UCP200



select	Inquiry	型号	轴径 d		外形尺寸(mm)											轴承座型号	轴承型号	重量(kg)
			in.	mm	H	L	J	A	N	Ni	Hi	HO	S	B				
UCP202		15														UC202		
202-10	5/8	17	30.2	125	96	32	12	16	13	57	11.5	27.4	202-10	P203	0.6			
203													203					
203-11	11/16												203-11					
UCP204-12	3/4	20	33.3	127	96	37	13	16	14	63.8	12.7	31	UC204-12	P204	0.60			
204													204					
UCP205-14	7/8												UC205-14					
205-15	15/16	25	36.5	140	105	38	14	19	15	69.5	14.3	34	205-15	P205	0.70			
205													205					
205-16	1												205-16					
UCP206-18	1-1/8												UC206-18					
206	1-3/16	30	42.9	160	121	44	15	19	16	82	15.9	38.1	206	P206	1.05			
206-19													206-19					
206-20	1-1/4												206-20					
UCP207-20	1-1/4												UC207-20					
207-21	1-5/16												207-21					
207-22	1-3/8		47.6	167	126	48	15	19	17	92	17.5	42.9	207-22	P207	1.31			
207		35											207					
207-23	1-7/16												207-23					
UCP208-24	1-1/2												UC208-24					
208-25	1-9/16		49.2	180	136	52	18	21	18	98	19	49.2	208-25	P208	1.7			
208		40											208					
UCP209-26	1-5/8												UC209-26					
209-27	1-11/16		54	189	146	54	15	21	20	105.5	19	49.2	209-27	P209	1.86			
209-28	1-3/4												209-28					
209		45											209					
UCP210-30	1-7/8												UC210-30					

UCP200

210-31	1-15/16		57.2	204	159	57	19	22	21	112.2	19	51.6	210-31	P210	2.34
210		50											210		
UCP211-32	2												UC211-32		