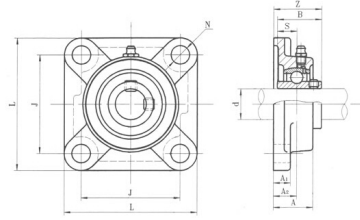


UCF200



select	Inquiry	型号	轴径 d		外形尺寸(mm)								轴承型号	重量(kg)
			in.	mm	L	J	A2	A1	A	E	N	S		
UCF 202		15										UC202		
202-10	5/8	17	76	54	15	32	25.5	30.9	11.5	11.5	202-10	0.57		
203											203	0.5		
203-11	11/16										203-11			
UCF204-12	3/4	20	66	64	ts	11	25.5	33.3	11.5	12.7	UC204-12	0.51		
204											204			
UCF205-14	7/8										UC205-14	0.6		
205-15	15/16	25	95	70	16	13	27	35.7	11.5	14.3	205-15			
205											205			
205-16	1										205-16			
UCF206-18	1-1/8										UC206-18			
206		30	106	83	16	13	31	40.2	11.5	15.9	206	0.95		
206-19	1-3/16										206-19			
206-20	1-1/4										206-20			
UCF207-20	1-1/4										UC207-20			
207-21	1-5/16										207-21			
207-22	1-3/8		117	92	19	15	34				207-22			
207		35									207			
207-23	1-7/16							44.4	14	17.5	207-23	1.21		
UCF208-24	1-1/2										UC208-24			
208-25	1-9/16	40	130	102	21	15	36	51.2	14	19	208-25	1.5		
208											208			

UCF200

UCF209-26	1-5/8										UC209-26	1.7
209-27	1-11/16	45	137	105	22	16	38	52.2	16	19	209-27	
209-28											209-28	
209	1-3/4										209	
UCF210-30	1-7/8										UC210-30	
210-31	1-15/16	50	143	111	22	16	40	54.6	18	19	210-31	2.1
210											210	
UCF211-32	2										UC211-32	2.5